



**SUNCOR ENERGY INC.
Base Mine Extension**

INITIAL PROJECT DESCRIPTION SUMMARY

*Suncor would like to acknowledge the work of
Patrice Mercredi to translate this document into Denesuline Language.*

February 2020

This text is translated from the original English version and is provided to community members for ease of reference.

To the extent there is any discrepancy, please refer to the original English version available here:
www.suncor.com/BaseMineExtension

T'A BEGHAÉRETLIS

Page No.

1.	TĒLES DENE TA LA NETHÉ KE NIHOAH BĪSI, THI T'OK'E LANATHE NIYĪAH NIH HORETLISKE HOYIYI TOK'E HASI.....	1
2.	EKODANE TAȚO LANETHÉ K'E I NIȚQTAH BASĪ YATI	4
3.	EKODANE T'AȚO LANETHÉ K'E I NIȚQTAH BASĪ YATI DERINUKEHOCHĪ DENEHEL	4
4.	ERELES KQÉ NATHÉ YATIYÉ T'A T'O YONETHÉ LANETHE K'E NIȚQ'T'AHA	5
5.	LA NETHE BEDĪHADOWÉ BETOREAH HA.....	5
6.	ERIHTL'IS GHARÉ YATI DEYER K'E T'OHÓ LANATHÉ HOLÉ HA NOWELASĪ ERIHTL'IS GHARÉ YATI DEYER K'E LANATHE HOLÉ	6
7.	LANATHÉ K'E HOLÉ, ALA NOWELÁ DAHELCHI THI BETA EGHALADA YOHWE NANĪLYÉ	6
8.	LANETHÉ EGHOK'ET'O BELAȚGHÉCH'Ī NELȚA T'AȚO HOLÉHA THI T'A T'O BEK'ERETĪI K'E EGHADALADA HA.....	7
9.	THE BASE MINE EXTENSION HOLYÉ, YONATHÉ ERIHTĒ'IS K'E TAȚO LA HOLÉ HA, HONETHĪ	7
10.	ELADQ NOWELA DAITĪ T'A T'O SOGHE DATHĪĒCHĪ WALI NEDRI LANATHE BASĪ BEGHENAIDE BEKARIHTLIS	7
11.	DASI BORETĪ YODOK'E HONARE T'O KE LANETHE NIȚQ'T'A HA NIHOK'E EGHENA, THI TU,LUE, TĪCHADI HQLĪ	8
12.	NOWETHI NARAJER, NOWENI DANAZQ HOTIYE DAGHETA,THI ALA NOWENAI NARAI DÉ, THI LA HEL CHUMBA DANOWECHĪ BEGARETLIS	8
13.	CHUMBAHO NIHO NIHOCHĪKOLDENENATHÉ LANETHÉ BASĪ DENECHARANI.....	10
14.	NIHOCHĪKOLDENENATHÉ ERETLIS NETHÉ DAGARÉ LANETHÉ NIȚQTA YESENEYĀĒTI HA BEGQTA ȚAȚ'E THI DAȚO LANETHÉ BELADALCHI HOTIYE BEGHODI, TU,LUE, TĪCHADI BESDOLECHA	10
15.	NIHOCHĪKOLDÉNATHÉ TU,NIH,THIT'Ī CHADĪH HEGHOLNI BESTOLECHA ERIHL'IS NATHÉ YATI DEYER ELADQNI HELCHI LANETHÉ NIȚQ'T'A BASÉ BAHOȚA, T'A ERIHLIS KONE NETHE DERI NOWAI GHĀ BAGHQ NAYTI DÉ.....	10
16.	NIHOCHĪKOLDENENATHÉN NIHNÉ THI NIHOCHĪKOLDENEASÉ NIHNÉ ALBERTA TĒLULE KE YAK'EYAGHÉ HOCHĪ THI NEDERI NIHNÉ KOCHĪHELÉ BASĪ TU,LUE, TĪCHADI ERETLIS NETHÉ YESENEYĀĒTI ELADQNI HAYILE HA GHONĪ	11
17.	NADERINUWEK'EHOCHĪ DENE (CANADA), HQĒLETHÉ BA NEZQ HELEHA –BASITA, THI BECHĀNIHÉ, YONISĪHOCHĪNOWECHĪ ȚAȚ'E, NIH BETAHOTĪ, YONISĪTTHAHOCH'ĪHOTTHE'R, TTHATTHA HOCHĪ NOWET'AK'E BORETĪ BETOREANETHÉ NOWEGHĀ BESDOLÉHA, T'AȚO ALA NOWENIYA NAIDÉ, YONISĪHOCHĪ TTHA DASI BET'A DAGHÉDA NOWEGHĀ DODIALNEHA, THI T'A T'O NOWETHI NARAJER, NOWENI DANAZQ HOTIYE DAGHETA BOREĒAH HA	11

18. EGHOK'ET' T'A GHONÉ TĹIS BEGHONOREYA LAŦ'E NUNÉSHÉ K'ASĹ KONÉ TA TLIS HELCHI GREENHOUS GAS HOLYÉ BETLISE YATAGHE Y CHĹ NIRITTHI.....	12
19. EL'K'ECHA LA NATHE YUWIA ŦĹDEL BET'AHOTĹHELÉ 'AH THI TLIS LERÉ TTHAIGHE YATAGHÉ CHĹ DETTHAG HEL NERETHÉ.....	12

LIST OF FIGURES

Figure 1: Project Location	2
Figure 2: Proposed Project Area.....	3

LIST OF APPENDICES

APPENDIX A References	
-----------------------	--

1. TĒS DENE TAĒ LA NETHÉ KE NIHOAH BĪSI, THI T'OK'E LANATHE NIYĀH NIH HORETLISKE HOYIYI TOK'E HASI

Suncor Energy Inc., La netheghe nihoah horeghe, Base Mine Extension (la nethe ke) holye heġ chi ha. Ēes thaye zenı ke degothi niġtah ha, thi eyer t'a Ēes thaye zenı bet'a Ēes elghecha holé ha ah. T'a dōġ t'a the ho chġ Base Mine Extension edġ t'a ha. Ne dari Ēes thaye zenı ho ah eyer ʔalghe ke les eghala da ha ah, Suncor's Base Plant facility, holye, t'o ghe do le nethe Base Mine operations hol ye, Ēes thaye zenı be ghoho ther ʔh t'e. La nethé, nailbathi chog hel Ēes thaye zenı be t'a helcho thi les bischi chog eyi bel la nethe ghe bet'ohot'i t'o ghe , Ēes thaye zenı helcho ghe ho ʔa, (primary extraction) holye t'o ho ghe Ēes thaye zenı beghala da ghe, eyer t'a Ēes thaye zenı cha cho nethe ho ler hal ʔi, Ēes elghe cha be t'a ho le. Eyer ho chġles elghe cha nani ho le ʔa t'e.

T'a hoghe Les Dene Nathé hol ʔa, bel yati ha de deġs ʔa t'é

Suncor Energy Inc.

Blair Penner T'a kolthere bisı

Address: P.O. Box 2844

150 – 6 Avenue SW

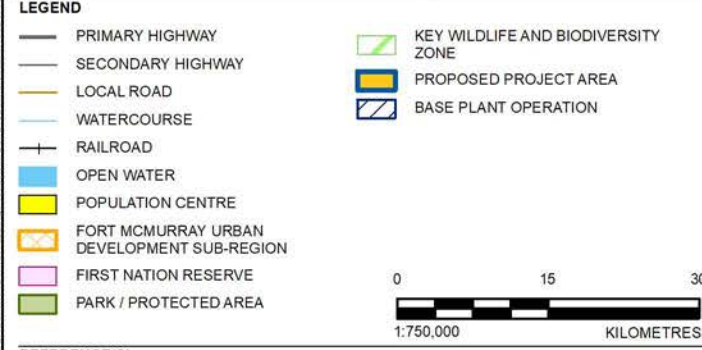
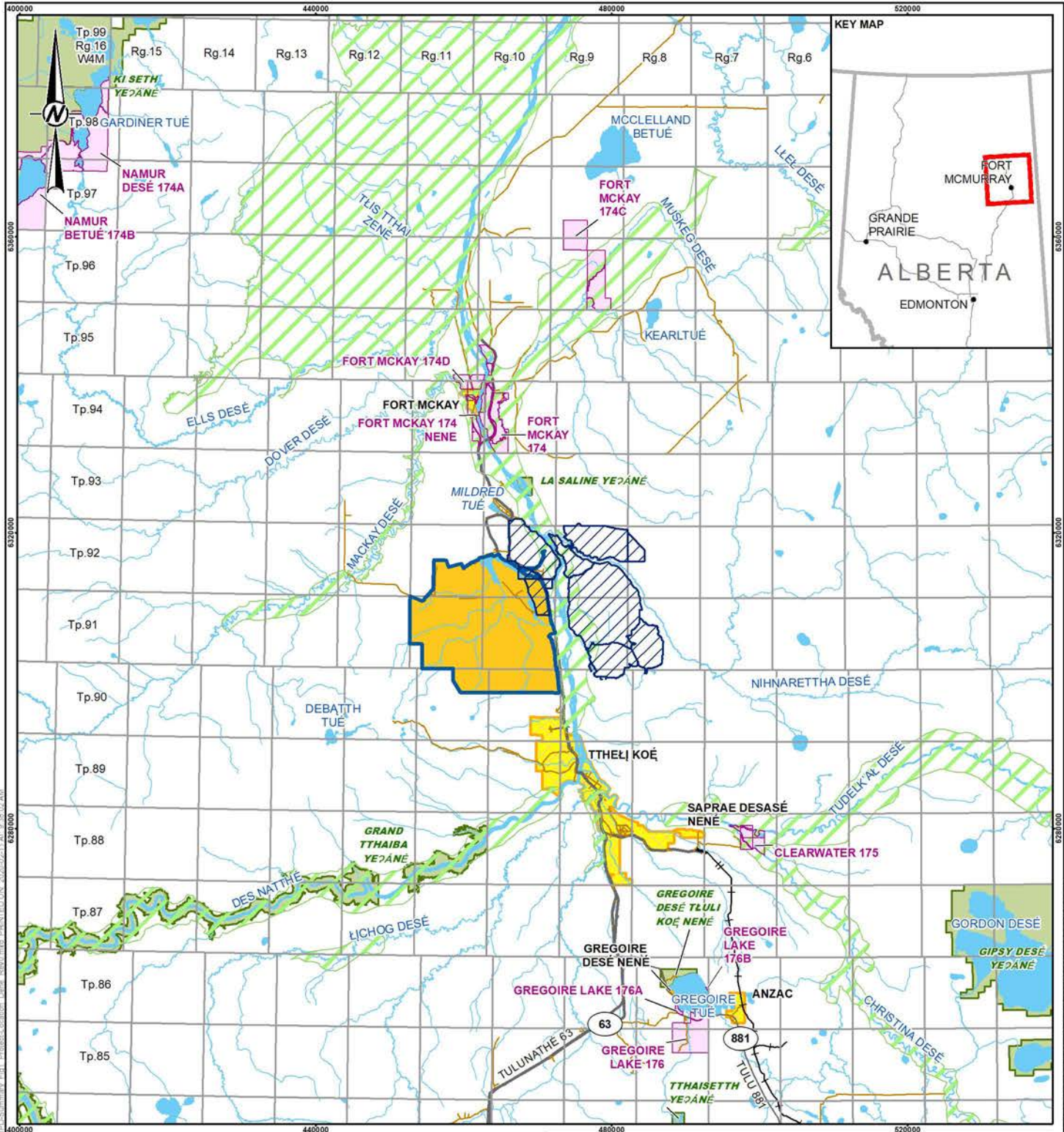
Calgary, Alberta T2P 3E3

Project email: BaseMineExtension@suncor.com

Project phone number: 1-855-955-3054

T'o ghé Suncor Energy Inc la ghe niġhoah horeghe Figure 1, deġs ʔa t'e, Thiġı kqé City a Fort 'McMurray, Alberta, k'a, Regional Municipality of Wood Buffalo Ēulı ke yaghe, Township 92, Ranges 10-11, West of the 4th Meridian; Township 91, Ranges 10-11, West of the 4th Meridian; and Township 90, Ranges 10-11, West of the 4th Meridian, niġhorġlese ke deġs. Eyi ka, koe ha yorġ la ʔa t'e, Fort Mckay, nonenā chġ elghe dechġase ho ʔa ho. Anzac sōġona dechġase ho ʔa t'e. Suncor Energy Inc la ghe niġhoah horeghe, taghe dechġase nesġ thi thiş niġhorġlese ke degkareġs, yanısġ kaġ dene bechanihe dadġ ʔa t'e. Eyi ghe yaghe naghe dechġ ye hō ġı ʔıġchosġ dathela dene bechġ. Thi beghalthġine sōġaghela elachelı ch'et'esġ kóé théla. Eye ho chġ nagma ch'et'esġ kóé ho la ʔa t'e.

Nederı la nethe beghe senō t'e, niġhoch'ı koldı dene ġulı ke yaghe Ēes Dene, Suncor Energy Inc ye ke les hel cho ha ba senō t'a, *Mines and Minerals Act: 7280060T23, 7406090415, 7414060262, 7411060938, 7411060939, and 7405080346* ke ʔa t'e. T'a ye ghe la nethe hole ha, 20,000 hectares haghāġya, Latitude 56° 53' 37.51" and Longitude 111° 35' 23.51" (Figure 2), keyaghe.



PROJECT
BASE MINE EXTENSION

TITLE
PROPOSED PROJECT LOCATION

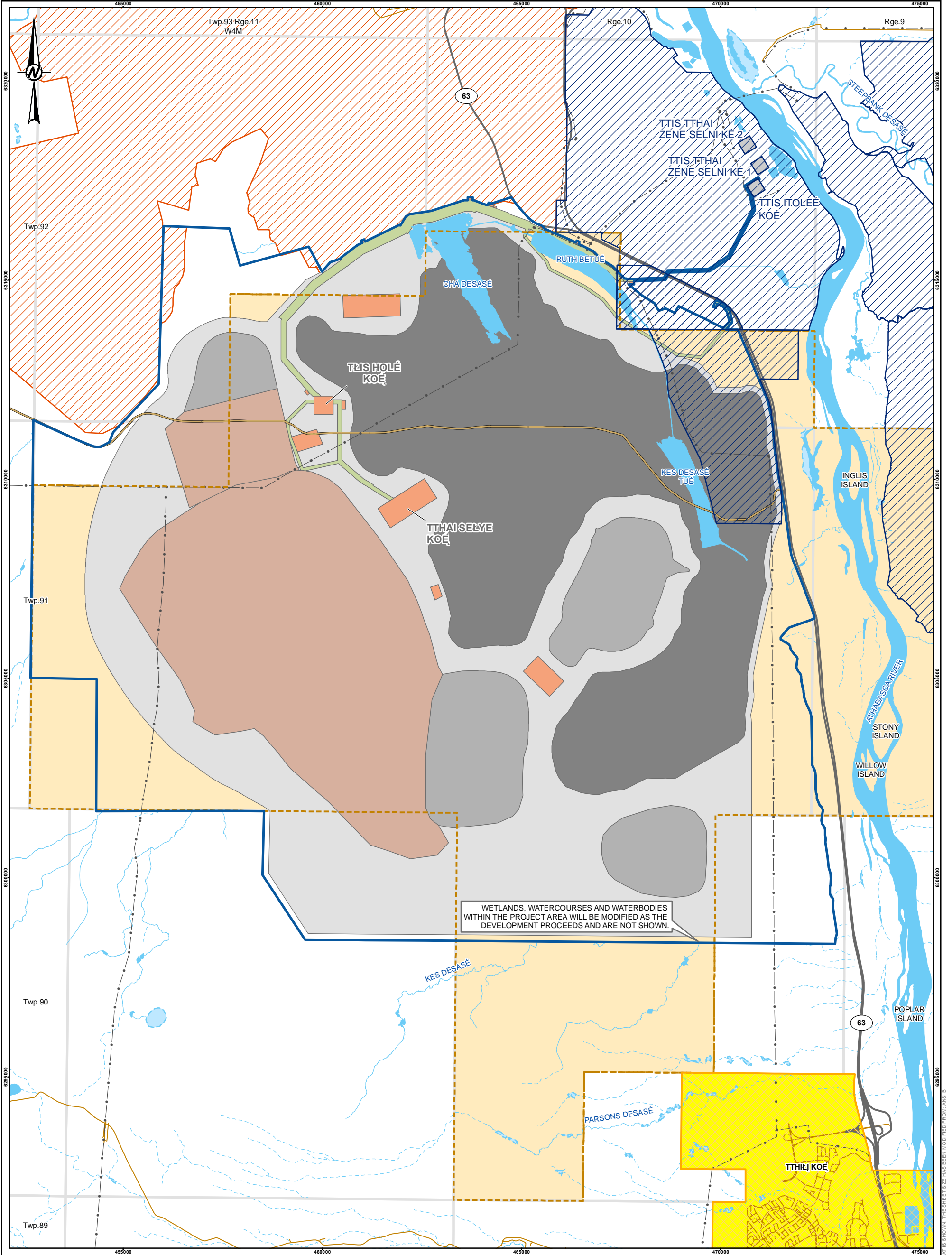
CLIENT	SUNCOR ENERGY	
YYYY-MM-DD	DESIGNED	2020-02-11 JG
	PREPARED	PT
	REVIEWED	JG
	APPROVED	TD

REFERENCE(S)
 ALBERTA DIGITAL BASE DATA OBTAINED FROM ALTALIS LTD. © GOVERNMENT OF ALBERTA 2019.
 ALL RIGHTS RESERVED. IHS ENERGY INC. AND GEOGRATIS. © DEPARTMENT OF NATURAL RESOURCES CANADA. ALL RIGHTS RESERVED.
 PROJECTION: UTM ZONE 12 DATUM: NAD 83

PROJECT NO.	PHASE	REV.	FIGURE
19124718		0	1

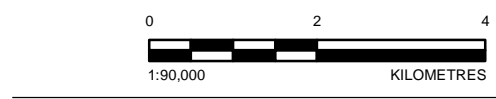
PATH: I:\PROJECTS\SUN\19124718\MapDocs\19124718_19124718_Summary_Engt_Proposed_Mine_Extension_Map_Sheet_19124718.dwg
 Project: Summary_Engt_Proposed_Mine_Extension_Map_Sheet_19124718
 Date: 2020-02-11 10:38:02 AM

IF THIS MEASUREMENT DOES NOT MATCH WHAT IS SHOWN, THE SHEET SIZE HAS BEEN MODIFIED FROM ANSI A



LEGEND

	PRIMARY HIGHWAY		BASE PLANT OPERATION
	LOCAL ROAD		SUNCOR OIL SANDS LEASES AND PERMITS
	AOSTRA ROAD	PROJECT FOOTPRINT	
	TRANSMISSION LINE		FACILITIES
	WATERCOURSE		LINEAR INFRASTRUCTURE
	INTERMITTENT WATERCOURSE		MINE AREA
	OPEN WATER		MINING INFRASTRUCTURE
	INTERMITTENT OPEN WATER		OVERBURDEN DISPOSAL AREA
	FORT MCMURRAY URBAN DEVELOPMENT SUB-REGION		TAILINGS AREA
	SYNCRUDE MILDRED LAKE MINE		
	PROPOSED PROJECT AREA		



NOTE(S)
WETLANDS, WATERCOURSES AND WATERBODIES WITHIN THE PROJECT AREA WILL BE MODIFIED AS THE DEVELOPMENT PROCEEDS.

REFERENCE(S)
ALBERTA DIGITAL BASE DATA OBTAINED FROM ALTALIS LTD. © GOVERNMENT OF ALBERTA 2019. ALL RIGHTS RESERVED. IHS ENERGY INC. AND GEOGRATIS, © DEPARTMENT OF NATURAL RESOURCES CANADA. ALL RIGHTS RESERVED. HYDROGRAPHY WITHIN THE POPLAR CREEK AND BEAVER RIVER WATERSHEDS UPDATED BY GOLDBER.
PROJECTION: UTM ZONE 12 DATUM: NAD 83

PROJECT
BASE MINE EXTENSION

TITLE
PROPOSED PROJECT AREA WITH CONCEPTUAL LAYOUT

CLIENT	YYYY-MM-DD	2020-02-11
	DESIGNED	JG
	PREPARED	PT
	REVIEWED	JG
	APPROVED	TD

PROJECT NO.	PHASE	REV.	FIGURE
19124718		0	2

IF THIS MEASUREMENT DOES NOT MATCH WHAT IS SHOWN, THE SHEET SIZE HAS BEEN MODIFIED FROM: ANS18 25mm

Na dari Nu ke ho ch'i yo nısj ho ch'i yo dok'e nare dene nade d'oh' Fort McKay First Nation, Fort McKay Metis Community Association, Mikisew First Nation, Athabasca Chipewyan First Nation, Chipewyan Prairie First Nation, Fort McMurray No 468 First Nation, Fort McMurray Metis Local 1935 and Chipewyan Prairie Local 125, lonon' ch'i none dech'i ase, Suncor Energy Inc. T'a La netheghe niho'za, Base Mine Extention (la nethe ke) holye. Harelyo' t'a t'a dene narade horoji, t'a la nethe ke who ch'i n'jthahale narade, Fort McKay First Nation taghe chathe' han'jthe nade. T'a. T'a La netheghe bonithi ha hoseke, Nihoch'i' kolde' Nethe nene ke hole hat'ehele. T'a Dene nene eghe dane tohochi ni, Nihoch'i' kolde' Nethe nene hole si Wood Buffalo National Park holye, elon'ona' ch'i nonen' dech'i ase dasi ch'e' aneltha Suncor Energy Inc. T'a La netheghe niho'za, Base Mine Extention (la nethe ke) holye ho dasi ch'e' aneltha.

Les thaye zenı ke degothi nih'qah ha, Base Mine Extension (the Project) holeye, Lower Athabasca Region of Alberta, keyaghe nih'q t'a' koldeasi luli keyaghe hogo'ni ha t'e, Alberta Public Lands Act., K'e, naderı ni ke. D'oh' ni horeles ke nih'q t'a he, Mildred – Kearl Lakes, Athabasca – Clearwater, Stony – Birch and Fort McMurray Fringe Regional Management ka ha t'e. 'a laghe dasi nathe. T'a Les thaye zenı ke degothi nih'qah ha, Fort McMurray – Athabasca Integrated Resource Plan, ke, hotighe yagh' danithen t'a t'o ereles k'e beghareles.

2. EKODANE T'ATO LANETHÉ K'E I N'JHOTAH BASI YATI

D'oh' T'a lanethe k'e nathe seholye Les thaye zenı ke degothi nih'qah ta d'oh' t'a tasinethé basi nareleya, thi ereles sod'orelthin, Suncor Energy Inc., La netheghe horeghe, Base Mine Extention (la nethe ke) holye, Regional Municipality of Wood Buffalo, Alberta Energy Regulator, Alberta Environment and Parks, Alberta Aboriginal Consultation Office, Fisheries and Oceans Canada and the Impact Assessment Agency of Canada., erles bel yati hon'jther at'e. D'oh' t'a hel nadaya'lti, yechi, beghae yati , phone, holye taho, thi, elthi yel yaghe'lti, éreles t'a dar'lesj bel beghe nayathi, t'a t'q yonathe Les thaye zenı ke degothi nih'qah honi, d'oh' t'a t'o la nethé holchi ha, Nihoch'i'kolde bereles nethe t'a t'o la nethe n'jhot'a net'i, begharé eghaladaha, thi yonathe t'anelthi la nethe ke eghalada bel hodi. Yati, t'asi nathé basi delthi bel yati ha dekerles, ni t'a t'o be t'a, t'chad' yonathé besdole cha yati, tuwé hoch'i' lué besdole cha, la ah chumba hole bet'e eghene ho'za'ha yodokenari, Regional Municipality of Wood Buffalo thi thil'jonari. Suncor Energy Inc., La netheghe niho'za horeghe adiho, tasinethé basi nareleya, stakeholders hele thi ereles sod'orelthin, agencies, holye, ereles nathe odiye bel halye ha, Detailed Project Description, holye.

3. EKODANE T'ATO LANETHÉ K'E I N'JHOTAH BASI YATI DERINUKHOCHI DENEHEL

D'OH'Q lanethe k'e seholye thi n'jhotah yati kada'ne, Fort McKay First Nation, Mikisew Cree First Nation, Athabasca Chipewyan First Nation, Fort McMurray No. 468 First Nation, Fort Chipewyan Métis Local 125, Fort McKay Métis Nation, Fort McMurray Métis Local 1935, and Chipewyan Prairie First Nation bel bonithen 'at'e, elthi bel natayeti t'a t'o yonathi lanathi ke bonithi yatiye, t'ahoke lanetheke n'jhot'a haho, t'a t'e la ho le haho, t'oho la nethe bonithé haho, Nihoch'i'kolde bereles nethe t'a t'q la nethe n'jhot'a net'i, begharé eghaladaha yati, thi yonathe t'anelthi la nethe ke eghalada bel hodi.

Suncor Energy Inc., La netheghe horeghe, Denesuline, Enaho, T'a t'o lanethe k'e nathe seholye Les thaye zenı ke degothi nih'qah t'a, Bigstone Cree First Nation, Heart Lake First Nation, K'at'l'odeeche First Nation, Kikino Métis Settlement, Original Fort McMurray First Nation Owl River Metis, Smith's Landing First Nation, Clearwater River Band #175, Willow Lake Métis Local 780, and Métis Nation of Alberta Region 1. Yonathe bel nayati 'a t'e

Denesuline, Enaho Suncor Energy Inc., La netheghe horeghe, Base Mine Extention (t'o k'e la nethe ke) holye naderı t'a bası nıdaya'lti 'a t'e; Nilchi nıdı slıni hanelé ch'a begходи ha, Thi berethaghe laré najar ch'a begходи ha, Ch'achané ghetale holathe dar'elath thi thaye lache bogходи ha, Nech' thıse ch'en dech'en yaghe bestole cha bogходи ha, Les thayıé zene hilcho beta ne nat'chol benat'i hela thi kon horat'i beta dasi hesdole cha bogходи ha, Les thayıé zene hilcho beta ni dene gh' chatheth konithje thi narach'ısa bestole bogходи, Les thayıé zene hilcho beta dene gh' becha ni ke bet'ohoti ha doié bogходи, Les thayıé zene

hilcho beta tu holisi, thi desase beta besdolé cha boghodi, thi Les thayé zene hilcho beta tu nidini hlini hane cha boghodi, Lue thi t'o ghe lue hqlé thi t'echadi bestole cha boghodi, Hayohrela gha la nathe ho qa beta besdole cha boghodi, Denechanié thi dada cha eghe ni hotiye boghodi, A lq Les thayé zene hilcho beta t'a bet'ahot'i hele t'a begohathere tuase k'e yaghe qadili hoza, T'a nowehel chumba natya ni besdole cha boghodi, Ch'aliiyaha hochi t'achai elkecha besdole cha boghodi, Honizl hochi nowé niné besdole thi nowegho hole cha boghodi, Nihochinkolde baghare ni hoghodi erelesnathe het'i Lower Athabasca Regional Plan holy chon owe niné cho etel elthi thé la ha boghodi ha lesnathé dene thi noni dene thi ena cho ha.

Suncor Energy Inc., La netheghe horeghe, Base Mine Extention (la nethe ke) hollye hel chi ha basi, hodiye nediri yati nathe dene honithere alq t'q el el lanethé basi dene hotiye dorelker ha, t'a narachede dene hel nadayalti ha, ni t'eto betahoti thi dene hel bagha yati ha yonathé, thi t'q t'o les boghodi thi, holé gha dene hel dayalti ha t'e. Naderi Nihochinkolde holt'a t'q dene hel lımarci thelchi ni ho tiye hqlethé yenethi qa t'e.

4. ERELES KQÉ NATHÉ YATIYÉ T'Q T'O YONETHÉ LANETHE K'E NIHQT'AHA

Base Mine Extention (la ke) hollye *Athabasca Oil Sands Region* keyaghe bonithiha. Benathé eyekasi la kasi ek'adane eyela, les dene yeghadalına qat'e, eye t'e t'q t'o ni kothe alq besdolihé ke egadalaine, eharé t'at'o ni eladq ke yakedorıya, *environmental condition* eyose, Niochıkolde brelese, *federal-provincial regulatory review.*, hollye eyi t'ataratı qat'e. Niochıkolde brelese, eyihelé les dene la nethe dathehı de Niochıkolde yati bet'alye, eyit'a ala eghadalna ni hozq boghodi erelsı. Thi begalthinı yonisi t'q t'o ni beghadalında ereles begharé eghaladeha thé la, thi t'q t'o elthi ereles ghare hole thi the la. Thi belayé nihochıkolidé beyatıah t'q t'o elthi ni hogodi, *environmental policies*, hollye, Yonathé t'q t'o dası hole thi la nethi basi elthi ni hogohdi, deri noraghe hochi dene beyatıyé t'q t'o ni hozq bek'oni the la ereles kqé. *Government of Alberta Lower Athabasca Regional Plan*, yati deyere betah yonathé elonq niné t'a ch'i t'a sihe ho le ha t'q t'o ni elthi boghıdı nelchi, tu, ni, nıderi nihok'e harelyq ehene bet'a hot'i ha harelyq dene ba thela.

Strategic Assessments in northeastern Alberta, hollye, Ereles t'q t'o yu thá ná t'q t'o les dene bela dıchı ya chq darı les hela, ek'olı, *Strategic Assessment of Climate Change*, hollye t'q t'o yunathe thá hochi, chq, honakath, edo, nechi nethath, eladqni ane ghq yati qat'e.

5. LA NETHE BEDJHADOWÉ BETOREAH HA

Les thaye zenı ke degothi djhotah ha, thi eyer t'a les thaye zenı bet'a les elghecha holé ha ah , t'o ghe dq le nethe, *Base Mine operations*, hol e, les thaye zenı 2030 and 2035 ko ke t'a hochi nelq ha t'e.

La neth t'o t'a betoreah thi hoselqa:

- Les thaye zenı detı bek'orechá, elkecha les beta holé qat'é, thi harelyq néné k'e hoselqé qa t'e thi harelyq dene yat'etı.
- Hqlethé beta chumba hole thi, nachahochı dene, yodokehonare hayohrela, thi *Province of Alberta, and Canada*, hollye thi bête nihochı koldı asé thi nihochı kolde chog ha chumba helcho, hollye, thi naré thenich'i edabe chumba hola koldı ha bedoreah qa t'e
- *Natural Resource Canada's*, hollye, bechedı yonathé t.há horelyq nediré nowé kwhochı dene, Canadians, bizı, hqlethé thá yet'orelah ha.

La netheghe nihot'e beta deneba soghe thi beghatheni:

- Dq hq, *Suncor Base Plant* holye theza beta les elghech'e holé alq bet'a hot'i ha la.
- Dq hq t'a les beta ho le thela, *Canada's oil sands resources*, holye hotiyé bet'ohot'i ha le
- Dq hq nederi t'a t'o les helcho, beghala da alq hoqsi begochq thi, eyi t'a chumba la beghq thi at'e.
- *Alberta Energy Regulator's mandate*, *holyé*, nowe lá ba elthi dahilchi, nedri, ni elthi besdo le cha begha dalaida ha t'e
- thi, beta chumba hoteye holé thi chumba yonathé bet'a hoti nalí ha t'e.
- t'ahí chumba la la basí nira ah, *Suncor*, ba hoqsi hotiye chumba halchen ha beta.

6. ERIHTL'IS GHARÉ YATI DEYER K'E T'OHÓ LANATHÉ HOLÉ HA NOWELASJ ERIHTL'IS GHARÉ YATI DEYER K'E LANATHE HOLÉ

Section 25 of the Schedule 2, to the Physical Activities Regulations, holyé, ereles beta t'a t'q dasi holé ach'di

Ti'is tthai zene beghalada k'e nacha halyé betá tanisj qasj hozaqhtya anéha, thi betá Ti'is tthai zene holé, 10,000 m³/holyé, elahé dzine danlt'o bet t'is elk'echa holé ha.

Ti'is tthai zene helcho nih kaghé nihoye holrelye beghalada k'e 22,672 *hectares* anelt'é nihnat'athiasé heghalya. Koli, 20,000 *hectares* anelt'é nihnat'athiasé heghalya holí hola ha, dqhó La netheghe t'a horeghe k'e. Eyiah Ti'is tthai zene helcho nih kaghé nihoyaghé holrelye beghalada k'e, 10,000 *cubic metres*, 10,000 *limil dechen* elahghe dzine kle k'onilt'é t'is holaha qat'é.

7. LANATHÉ K'E HOLÉ, ALA NOWELÁ DAHELCHI THI BETA EGHALADA YOHWE NANILYÉ

Ala ch'é thiyé dasi hole ha bakareles t'a t'o bet'ahot'i ha ellet tu, edinaghaé kon beta chacháne ghelet, hqeatthe najer hotthel beta ehalade, níhholesé tek'aní beta dasiholé, nideri horelyq betaegalade, nathé k'adané holi, thai, thi chachané eladqni hole hozaqsi nazq alne bet'a hot'q ha *Suncor Base Plant*, lanethé beta eghalde koé. La yowé elk'ech'a beta eghaladaha, Lak'e nethé Koé, nih hoyaghe horelye cha kale chog thi, nalbathe chog beta les theyé zen helcho thí, beghathini t'a la yowé ele t'e. *Suncor Base Plant*, beghathini, yoh kothe holeha, t'a erelis koé eghadalane ha. Nari la, t'a si senalye koe, thi dene eyacha koe t'o k'e yoh daghíank'e. Dq t'a bela ha dene charani koe *Suncor Base Plant* holye, begha eyer thelahí ha.

La nethe bonitheré, *Highway 63* betethé tulu hoah erylér hochí t'a tule t'a dqniah *Suncor Base Plant*, chí tulu beghareah ha. Dq t'a tulu *Base Mine Extension (the Project)* ka hoah thini tulu ch'e tí ha ana ha la nethé hqonither dé. T'a la dene kothe da del ghq nonq ther de t'o k'e ba senihot'a ha. Nare chíthol chog t'a beye tles tthai zené ghehali ha, thi edí nakoné t'ulé chog heí t'a aqaghae chumba na la nathé dalchi dqhó, *Suncor Base Plant Alberta Oil Sands Conservation Act*, (Approval No. 8535N) holye k'e belahé datí ha. T'a nadari nihochkolde be erihl'isé k'e b'qkqat'q hel dé *Suncor* ye ba *Alberta Pipeline Act and the Alberta Hydro and Electric Energy Act*, holyé k'e horek'e ha, la nethé doholnií thi chí t'o.

8. LANETHÉ EGHOK'ET'O BELAĞHÉCH'Ị NEL?A T'ATO HOLÉHA THI T'A T'O BEK'ERETLI K'E EGHADALADA HA

Base Mine Extension (the project) (la nethe ke) holye, 80 million, Elghedjona la millyo li barri analt'e helchi ha, (225 thousand) noñona ch'ị nonachị solghe limill libarri tili elach'ị k'e yitcho ʒat'e, thi horelyo ah yonathé nonachị solghe tles holi ha.

Base Mine Extension (the project) (la nethe ke) holye, nih hoghaghé tles tthai zené dahelcho ha, t'a hoasi la nezq bela dat'ị lanethé k'e egadalanaha t'e. Tles tthai zené chachaichogkalé t'a nihoyi daidatth eyer hohj tles basch'ané chog ya tles tthai zené *Ore Preparation Plant*, holye, ch'ị elanalıyı ha, eyerhochj chachané tili chog ya tles tthai zené naraltatho, eyarhochj tu nelghos hel hotıyı det'or. Tles tthai zené ho tiye detori, ch'itthulé chog ye delho, chachané tili chog t'a therı holt'a chj heler ʒat'a. Tles zené chachané tili chog t'a therı holt'a hoch'ị ch'itthulé chog yaghé *Suncor Base Plant* t'a karaʒa chachané tili chog ye hjetthé beghalada. T'a t'o la ke BMX Project hoalyé t'o ke hoʒa *Suncor Base Plant* dqhq dettis, *Figure 2*. Holyé k'e

La nethe ke kothi yoho, tuluho, edınakoęne chachane t'othéo bet'ahot'ı ha holéha la nethe honıther de. Nederı, la ke nihkaghe eghaladaha, Tles tthai zené detore hole ke, tles tthai beghohetherı tuasé ke nıdıl hel beghalada. Dası nalye, yaghé, layowá thi nih t'a bet'ehotj beghaladaha hodi.

Lanethé kothé k'é tu, chachabeta ehghalada, edınakoné yuwé, tles, adó la ha bet'ahotq thi tháye la yowé sadanaıya t'a alq behata hot'ı ha söt'ilé snj dé Suncor Base Plant k'e.

9. THE BASE MINE EXTENSION HOLYÉ, YONATHÉ ERIHTL'IS K'E TATQ LA HOLÉ HA, HONETHJ

La nathé yonathé erıhtl'ıs k'e tatq bonıthı ha nihochjkolde bedagheré, 2019 hoch'ę 2026 hochj hotıyé begħa nadayate, thi banık'eché de hıq bonıthıha. Eyer hochj beye eghaladlade elk'echa yohle ha thi t'a tq ye t'a tles zene helcho, t'a t'o beta tles elk'echa hole, chachq elk'echa elkerale ha, Edınakoné lule, narele ha, 2030 dé, eghanohot'e ha. Ttes helcho koe nathe baghadaladaha 2030 bonıthı ha, 2055 hochı, 2055 hochı hareıyo la yowa nadanalyé ħa t'e.

10. ELADQ NOWELA DAITJ T'A T'O SOGHE DATHILCHJ WALI NEDRI LANATHE BASI BEGHENAIDE BEKARIHTLIS

Suncor, dqhq ta t'o chumba na la netha k'e ba hole eladq alye nedé nozq hanı, nıdre tles tthai zene dq nih hoch'a hochj helcho, *Suncor-owned*, holyé, elaghq *owned by other operators*, holyé eyıhelé t'a dene edeba thenı chumba na la hetj eyı helah hela ah. Thi begħatthenı la elghecha denet'a edeba thenı chumba na la hetj ba hoʒa hot'o ħa t'esj. (i) dq t'a t'q chachq k'alé chog, *draglines*, holyé beta tles tthai zene helcho, thi *slurry-at-face mining*, holyé, beta tles tthai zene detori, beta tthai tles zene helcho achedı, (ii) eladq tles tthai zene elchásj ħalʒa thi (tuhedj eyılé tashı det'oghe tles tthai zene elchásj ħalʒa ha hoʒa,) (iii) elk'echa la yowa thi dq chachané elghacha ʒala elchradı do t'a t'o tles tthai zene behalada (dq tuasé tthai hel tles zene begħahethrı ʒa dile hel chachané tili chog t'a tles tthai zene detori cho ala alye nıdı yadı, yonathe begħalada ha, (iv) nih t'a lak'e bet'ahot'ı bek'e nih honesé halyé nalj ha selya de. Suncor hareıyo dası nelʒa, d'q edınakoeđah hını benı holj t'a la elghacha holé thi t'a hayohrıla yodok'enaré, nihochjkoldé hel thi hareıyo ba sogħaha kolde ħa t'e.

11. DASI BORETĪ YODOK'E HONARE T'O KE LANETHE NIHQŦ'A HA NIHOK'E EGHENA, THI TU, LUE, TĪCHADI HQLĪ

Dq̄h̄q̄ nih na'tathé tohoghe lanathe nihq̄t'e, deschiye, hayohrela dode. Tohoghe lanathe, k'e nihot'e, deschiye yaghe, ta't'o yonis̄ihochĭ t'oho nih hethelĭ nisĭ, elk'echá dechĭ hel nih k'q̄nisha, taq̄nisĭ asĭ, niderĭ Alberta tulu keyahe eghalyĭ. Dasĭ Hokath nené k'e, beta dechĭ elghecha deneché, ʒal dechine, thi k'as dechine. Dasĭt'a betanĭsĭ elghecha deneché t'ohok'e lanethé nihq̄t'e, holt'q̄ nené k'e tu théka thi t'asĭ chĭ helbĭ helé nené ʒa t'e. Hoby nene, chathasé nih thékar ke hqlĭ eyĭ ha'tle.

T'ahok'e lanethé k'e hosek'e, *Athabasca Region of Alberta*, holyé k'eyaghe, nihochĭkolde nene k'e, *Alberta Public Lands Act* t'a yatĭ deyer ghare nih boghodi ʒa'té. T'ahok'e lanethé k'e nih elk'echa betadohot'ĭ, tĭs hqlĭ nene, thi, beghe sha k'e, luwé helcho, narach'ísé, tĭs beschanéase tok'e losĭ ghekothe, thi yath beschanéase, thi dechĭnathé chog helcho, ts'iasé yé chech'á dil, tsádheth kadonthen, ʒa't'e. T'ahok'e lanethé k'e hosek'e, Dene tthnĭ nih dabechĭ, *Provincial Crown*, holyé nihochĭkoldene tulu keyaghé nene haĭĭ. Yonisĭ 1940 koho tthé kadoot'áni. T'ahok'e lanethé k'e hosek', *May 2016* nih korĭka ʒa't'e.

T'ahok'e lanethé k'e hosek'e beké dasĭ bet'oreʒa holĭ nathé kohodinĭ.

- Sha ha, elk'echa luwéwé kadonat'a, tthéba luwé, nih't'élĭ luwé, luethathé luwé, *yellow perch*, (holyé basĭ k'osahélé,) ,daldalĭ bechinanathe lué, daldalĭ delkai lué, brookstickleback , (holyé basĭ k'osahélé,) , tthé hashadaĭ lué, betthĭ ttheka luasé lué, lué k'q̄né luéasé, bek'é sarĭdĭ luéasé, bethĭd'akaré luéasé, tuw luéasé, dasĭbebardelkos lué, t'ahochĭ tthé choghé luéasé, luéshané, lussthé C, daĭkuré luéas'
- Nihok'é noníeshá beĭ elghecha dechĭje ʒa'kaĭ ʒa'kará,k'es, k'eskaíé
- Déchaqé thi Déchaqéhelé hoĭ'q̄nĭ tthali nihné
- Tthai neshā dechayaghe hoʒa

Hareĭyq̄ Beto'oreʒa eĭelt'e derin nuk'e thi tĭulé k'e yaghe hochĭ tĭchadi, deniaé, shas delzen, chá, jen, tthá, chize, éthé, ts'eli degonĭ, chath, detain, Ttha dechayaghe hochĭ łog tuwé ʒĭyezé, dechaĭelk'echa ĭyezé, miĭtsaghe, d'eĭ

12. NOWETHI NARAJER, NOWENI DANAZQ HOTIYE DAGHETA, THI ALA NOWENAI NARAI DÉ, THI LA HEL CHUMBA DANOWECHĪ BEGARETLIS

Lanathé k'e nihq̄t'e *Alberta Health Services North Zone* holyé keyaghé, *Northern Lights Health Region* holyé belt begħa'thĭnĭ *Aspen Health Region and Peace County Health Region.*, holyé ʒa't'e. Dásĭ hochĭé t'at'o ala dagheda hotiyé sughenai, naderé horĭcha keyaghé *Alberta*, nihochĭkoldĭ tĭule keyaghe, holyé. Lanathé k'e nihq̄t'e Dásĭ hochĭchĭ koló, t'at'o ala dagheda hotiyé sughenai basĭ hotiyé nanota *Northern Lights Health Region* yaichĭnĭ, alq̄ beyatiyé betoreʒa ʒa't'e.

2010 Royal Society of Canada, holyé, holnĭ, tĭs tthai zene holnĭ, *Northern Lights Health Region*, adĭ, dagheda hotiyé sughenai, tthĭĭ honare, noweba hotiyé sughenaielé la't'e, nederĭ *Alberta*, holyé nihochĭkoldĭ tĭule keyaghe, denela suka beadle yaghe nacher ʒa, thi kontue, chalt'oweyésĭnĭ t'a, dene lagħalingde, tĭsbescháne eĭnanĭir t'a, dene dadasĭnĭ bechĭ kolĭ, eĭel erat'l. *Northern Lights Health Region*, holye nonĭ, tthĭĭ honaré, nidikolya nethe karaq̄, nowekasĭ hayohrĭla edĭ nidikolya nowéʒasĭ la tabechĭ ʒa't'e. Dazĭ hochĭ nonĭ, kó dadá, *Alberta*, holyé nihochĭkoldĭ tĭule keyaghé, *Alberta Health Service*, holyé, holnĭ, *2019 Report on Cancer Statistics in Alberta.*, erĭhtĭs k'e kodĭ.

Wood Buffalo honaré, t'o hochĭ tĭs tthai zene helcho beta lanethé honithere, tthĭĭ honaré bonithere ʒa't'e. Alq̄ tĭs tthai zene helcho beta lanethé honither hela t'o, thĭĭ tĭschĭchog ho thi, dene naralsa t'a, luewe t'a, thi chá'theth t'a, thi dechĭ helcho la t'e chumba dalchĭ nĭ ʒa't'e.

Tĭs tthai zene helcho beta lanethé 1960s bonither beta, thĭĭ honaré chethĭyĭlat'o eladq̄né aja dq̄h̄q̄ yone solone nené. Thĭĭ honaré t'a t'o hq̄lathé eladq̄ haja bekara tĭs Tĭs tthai zene helcho lanethe honithere beta.

1960s hoch'j 1986 hochj. T'a thé t'is t'thai zene helcho ha lanethe bonithere ni, egho *Great Canadian Oil Sands Plant (now dqhɔ Suncor Energy Inc. hohye)* holé hacha, t'is t'thai zene beta t'is elk'echa h'elcho acha, eyi bekésj, *Syncrude*, 1970s bonithere, eyer hochj beta, lanathé hoqsj, beta lanethe aja. Egó, thélj, 2,600 limil dene naténi, eyer hochj, 36,810 limniil dene aja 1986 hochj dene laq nechá lachani. Denelá aja ha thélj, ba t'a t'o eghonelta dene ha arelyɔ tasi ba thela hele t'a beba hornihlani.

1986 hoch'j1990s hochj. Darét'jkasj, lanathe k'e eghadalda bɔreħani, harelyɔ dasi eladɔni t'a, chaħaħthinibenihohj be t'a ehadalanani yenidoreshaħele t,a, thi harelyɔ dasi betahot'j daret'é, thi, dene eghadalana bɔreħa hacha ah 1999 hochjdene t'anel't'eni beašj ajahelni 1986 hochj. 1999 hochj dene danelta, 1986 hochj. t'is t'thai zene helcho beta lanethe hethelj.

Yuné 1990s hochi 2008 hochj lanethe chumba deti ah *Alberta*, nihochjkoleasé tluli kaghé, t'is t'thai zene helcho ha lanethe bonithere hochj \$1.5 billion chumba 1998 hochi, \$18 billion 2008 hochj chumba hanelt'a deti aja ni. Eyit'a dene eghadalana t'anisj asj hoqsj anet'e aja, thi eyet'a alɔ thili honare yoh karaɔ aja. Thiłj dene 1999 hochj 36,810 dene analt'eni, 70,000 dene 2008 hochj analt'e ajani. 2000's hochj t'is dene chog Thiłj hoanietħa chj t'is t'thai zene lanethé k'e nedoniɔa beta la dene yoh hoqelt'é.

2008 hochi 2011 hochj. Naré t'is dene nethé chog dahelt'araja, nederi nihhok'e chumba ghélat karaɔ aja, edidaɔasi barelisé la ah, t'anisj eghok'e chj anet'e lanethe doholani Borelah *Alberta*, nihochjkołdeasé tluli k'eyaghé t'ist'thai zené t'a ditiɔj karaɔah, lanethe, chumba ghelati borjrelah 2008 hochj 2009 hochj. Beta lanethé borelah naf. Thiłj 3% dene t'anelta chj hoɔanaħte 2008 hochi 2010 hochj. 2010 hochi 2012 hochj dene Thiłj honare t'anel't'hj 2010 hochi 2012 hochj. Eyiah yoh karaɔ laħt'eni esɔt'ite aja.

2012 hochi 2015 hochj. T'is deti anacha eyiah dene lsbá naralni beta t'is deti natlj. Naré T'is Dene nathé lanethe ch'asj hedalni yoné 2008/2009, kó t'is detihelaniq dqhɔ nedal natlj t'is deti natlj ah. 2012 hochi 2015 hochj Thiłj dene laq natlj, 10% elononj begħasé chj dene hoɔaneħte natlj, harelyɔ ah 80,000 dene hanelt'e aja. Thiłj benaré alɔ bel lanethé honanithj natlj, t'is deti natlidé.

2015 hochj dqhɔ hochj. Yoné 2014 t'is detihelani tanisj 50% elononj begħasé chj dqhɔ hochj. Beta dere nih k'e chumba karaɔ t'a tasi hole. T'is dene chog eyiah t'a lanethe nihqah ha ni yagħaranale, t'a alɔ dq la daħchi, bela netha karaɔ beta thi dene lá eghadalanaħela. Thiłj benaré thi hok'eréħa t'a dene lá adljya thahelhocħj, laq limil analt'e dene bekowé k'etareħa. Eyit'a dene karaɔ, 9% elotq begħasé chj karaɔ ɔat'e.

RMWB, hohye najahe hel barela:

- Thiłj honaré laasé elk'echa holj ɔat'e, hel thi harelyɔ ah 72,000 limil dene anelt'e nadá 2018 hochj.
- Thiłj honaré, hayohreħlasé harelyɔ t'e 3,000 limil dene narada.
- Thi begħalthini hareħtɔ ah 36,000 la dene elachale chétes koé narade ɔat'e.
- Denesuliné thi ena deri nu kochj benené nihochjkoldenathe yedogholni darade.

Thiłj hoħethé najá neyá ɔat'e, najá hayohreħlase hochj koenathease hathelj, harelyɔ, dasi elk'echa holj ɔat'e. Dqhɔ chinu k'e ethiya koe chog theɔa, erihit'is koé elkeħa sekoé honelta ha, sa koé elgħecha holj, dene elk'echa beħaniéħa tasi elkeħa ba holj, hayoe reħa deɔasj naja hole kolo. Begħalthj thi Thiłj naré hayoeréħa asé bek'e dene tasi aratħa ba théla.

Thiłj naré hotiye dqhɔ thase hochj begħodi nat'e, thi hotiye begareriħt'isniah ĩt'e:

Selekove hel at'eké hoħneħt'e nade1 ɔat'e Thiłj koé. La elkeħa laħ, ɔat'neħteasé ya'te bekoé najá doħoħchi loħotj. Koli, lanethe karaɔ ane t'a, lá nade aja begħaye 15 hochj 29 hochi yasí karaɔ la t'e

Dene elk'edene nade ɔat'e. Denesuline, ena thi najá hochj hele deri nu kochj thi narade aja. Nadari dene harelyɔkochj dene nidala ba elk'echa saħo, beħani eladɔniah, harelyɔ eyi basj ba sohohye haħt'e. Dene elk'edene nade ɔat'e. Denesuline, ena thi najá hochj hele deri nu kochj thi narade aja

Dene Elachali elk'echa dene laħa naradé, t'ok' edgadalana chatasi koe ba hola, harelyɔ ah 2,000 limil nadé, naħi najá Thiłj

13. CHUMBAHO NIHO NIHOCHJKOLDENENATHÉ LANETHÉ BASI DENECHARANI

Suncor Energy Inc., La netheghe nihoah horeghe, Base Mine Extention (la nethe ke) holye heł chi ha t'a t'o nathé erihł'is halché nihochjkołde dene chumba yach'enı hıř'ılé. nihochjkołde dene ah bech'edi hıř'ehele.

14. NIHOCHJKOLDENENATHÉ ERETLIS NETHÉ DAGARÉ LANETHÉ NIHQTA YESENEYAŁTI HA BEGQTA ʔAŦ'E THI DAŦO LANETHÉ BELADALCHI HOTIYE BEGHODI, TU,LUE, TİCHADI BESDOLECHA

Alberta Energy Regulator, holyé, Responsible Energy Development Act, bełası, eyıah, Eretlis nethe yat'e lanethé niho't'e aseneyałtı boghoŦı t'a, thi t'a t'q elthı lanethe bela dalçı ha alq, Eretlis nethe deyer thela Oil Sands Conservation Act, the Water Act, and the Alberta Environmental Protection and Enhancement Act. Alberta Historic Resources Management Branch, holyé. Thi La nethe lanethé niho't'e aseneyałtı Eretlis nihochjkkolde ase belasé. paleontological sites, historic buildings, and traditional use sites Historical Resources Act tası bela dalçı hıř'e.

Nihochjkoldénathé *Environment and Climate Change Canada*, holyé beta Lanathé t'a tu, nił, t'ıchadı besdolécha yaseneyałtı boghoŦı t'a, Eretlis nethe yat'e *Species at Risk Act* and the *Migratory Birds Convention Act tası* hodoghołni ʔaŦ'e. Thi Fisheries and Oceans Canada helye tu besdolécha narełya elthı hele da ha, yaseneyałtı boghoŦı t'a s *Fisheries Act*. t'ası. Net'aħa tu, nił, t'ıchadı, thi denesı beta eghena, la thiho lanethé bet'a besdqlghq hech, Nihochjkoldénathé lanethé niho't'e hoghołni, elthıhele de yaseneyałtı ha hoʔa. Erihtıis denechı hoʔa, Beta tthé nałketth ha Nihochjkoldénathé bełası *Explosives Act*, tası hoghołni.

15. NIHOCHJKOLDÉNATHÉ TU,NIH,THIT'İ CHADİH HEGHOŁNI BESTOLECHA ERIHŁ'IS NATHÉ YATI DEYER ELADQNI HELCHI LANETHÉ NIHQŦ'A BASÉ BAHOʔA, T'A ERIHŁIS KONE NETHE DERI NOWAI GHĀ BAGHQ NAYTI DÉ

Base Mine Extention (la nethe ke) holye nihqtaħ da horeghe, beta lue, tué eghené besdolécha be- bası hoteye erihłıis netı hıř'é begharełtıis ha. La nethe hoŦtherdé beta luwai k'e besdolé ghoŦı, tu edıle hatye hotogh, thi tu harełyo helcho ha hot'o, thi tu besdola hot'o ha, thi luwaié niđııslı hané ghoŦı. Eghaladé k'e luwaié t'a boghodi ha ho ʔa bestole halé.

Base Mine Extention (la nethe ke) holye nihqtaħ da horeghe, beta t'ıchadı besdolécha be- bası hoteye erihłıis netı hıř'é begharełtıis t'a. T'a t'ıchadı, *Wildlife*, holyé, *Species at Risk Act*, holyé, t'a t'ıchadı besdolé cha hołathé boghodi eyihel erihłıis netı hıř'é begharełtıis bel ha. La nethe hoŦtherdé beta t'ıchadı t'ok'é nada, eleneché k'araʔq, thi t'a t'o jirełaisé ni karʔq,ba aladqnané.

la nethe ke holye nihqtaħ, beta eyasé chıřaħané nił danelł'o niđeli besdolécha be- bası hoteye erihłıis netı hıř'é begharełtıis ha. Naderı. la nethe ke holye nihqtaħ , beta lue, t'ıchadı, eyasé chıřaħané nił danelł'o niđeli , *Species at Risk Act* or the *Migratory Birds Convention Act*., k'e hoteye erihłıis netı hıř'é begharełtıis ha, thi la nethe t'a eyasé chıřaħané nił danelł'o niđeli t'o ghé nadanı ba aladqhaneha, t'a t'o niđat'o elenelyaniho, thi t'a t'q nił hodanelł'o niđilni k'ba eladqhane ha. La Nethe ke holye nihqtaħ beta eyasé chıřaħané nił danelł'o niđeli boghodi ha.

Hydrology, sni, Nadri niho'k'e tu hed'oghołni ach'dı, tu hokałbı thi elogk'e chı nił kałbıah eyıah *Wood Buffalo National Park*, keyaghé t'a t'o, la nethe ke holye nihqtaħ bası tu hoteye erihłıis netı hıř'é begharełtıis.

16. NIHOCHJKOLDENENATHÉN NIHNÉ THI NIHOCHJKOLDENEASÉ NIHNÉ ALBERTA TŁULE KE YAK'EYAGHÉ HOCHJ THI NEDERI NIHNÉ KOCHJHELE BASJ TU, LUE, TICHADI ERETLIS NETHÉ YESENEYAŁTI ELADQNI HAYILE HA GHONJ

Suncor Energy Inc., La netheghe nihqah horeghe`, *Base Mine Extention* (la nethe ke) holye, nih eladqane ha lé hatjle. Niche beta ch'achi hotiya nidistini enéla cha hotiyi *Suncor* yogholni ha t'é thi beghalthi tes zene horéthtaghe Alberta łuli keyaghe hochj Saskatchewan chj hotetthe hotiye yogholni řat'e. Nderi nih ke, tu t'a chj halı, bek'onot'a, eyi ah tu besd'olé cha hqıatthé net'j řa t'e, eyiah Alberta/Northwest Territories tu helj ha thi yogholni řat'e.

Suncor balanethé t'a nadri Canada ke ya chasj eladqane la helchi hatile

17. NADERINUWEK'EHOCHJ DENE (CANADA), HQLETHÉ BA NEZQ HELEHA – BASITA, THI BECHÁNIHÉ, YONISJHOCHJNOWECHI řAT'E, NIH BETAHOTJ, YONISJTTHAHOCH'JHOTTHE'R, TTHATTHA HOCHJ NOWET'AK'E BORETJ BETOREANETHÉ NOWEGHA BESDOLÉHA, T'AT'O ALA NOWENIYA NAIDÉ, YONISHOCHI TTHA DASI BET'A DAGHÉDA NOWEGHA DODIALNEHA, THI T'A T'O NOWETHI NARAJER, NOWENI DANAZQ HOTIYE DAGHETA BORELAH HA

Suncor, t'a, Naderinuk'ehochj Dené, t'at'o tıs Dene lanethé nihqah Naderinuk'ehochj Dené beta hqıthé ba nezq hele ha ah, yeł dayalthı t'é, nj basj thi bechaniyé thi best'olé hat'e. Nderi lánthé beta Naderinuk'ehochj Dené hqıthé ba nezq helé lahotj, řat'o beł la marci holjıni thi yanjshjhochj ni nowéchj, eyithi eladq anéha t'e, nit hi noweghaholeha t'e, eyi ah chátthe konithj ha hela řat'e. Nihok'e hořanı lanethé beta eladqniha, t'at'o nih betahotjıni, yonisjttháhochj hotthemısj, tthattha hochj nowetájk'é boretj betoreánethenj nowegha besd'oléhat'é, t'at'o ala nowainiye naidé, yonisjhochj tthá d'ası bet'a daghedanı nowegha d'odiálneha. Koli, nathé eyi basj Naderinuk'ehochj Dené beł'ohotı hat'e t'at'q lanethé nihqtahası, t'at'to nih hqıthé beta tası besd'óle begha nayatı hat'e Dene hel. Eyi basj erıhtlıs nethé bagharełtııs ha, T'ahok'e lanethé k'e nih elk'echa betadohot'j, tıs hqı nene ah. *Suncor*, Naderinuk'ehochj Dené hel nadayaltı nederı t'at'o lanethé t'a beta, nowesı t'a nowethı najere, noweni danezq ala danoweniya nairaidé, t'a bet'a daghıda esqt'ilé kole harelyq borełha ha lohot'j. *Suncor* ado, yonısj, nederı lanethé beta naderinuk'ehochj Dené elasjch'j ba nezq thi elasjch'j ba nezqhelé řat'e, basıt'a, bechanié t'a, edeba dası kolde, ba nezq hat'ilé.

T'a honıetthé bechanié thi t'at'o laah chumba darełchi ghq nayatı nathé daghılé řat'e t'oho t'ıs dene lanethé honıjıthter hochj bagharełtısk:

- t'at'o Naderinuk'ehochj Dené lak'é eghadalana, thi thenı edeba chumba dalchi dorełı'
- t'at'o tıs tthai zene beta lanethe honithı, benıhné, bechanié nethe řeladqni aneho
- thi tıs tthai zene holcho beta horetthaighe slınj yat'aghé chj nırethı řat'e yodoghé naré
- thi beghalthıni, lanethe beta hayohreła, tulunethé, tısbeshané řa ah borełni, t'a yed'ok'o naré hayohrełahasé narach'ede.
- thi beghalthıni, lanethe beta (hayohreła, řethıkoé, sekowé honełt'a, ala narach'edé, honıle basj soréř'e, dene nalchi dene) dahosełřa at'j, la dene ha, thi yodoghe ho naré narachéde thi ba
- nowechaniha nettha řeladqni řat'j lanethe tıs dene tıs tthai zene holcho beta

Suncor, alq Naderinuk'ehochj Dené hel yonathe bechanié thi t'at'o laah chumba darełchi, dene chané, bası yatı t'a yeł dayaltı hat'e t'at'o ba soghé walı nederı harelyq dası bet'oreřa bası.

18. EGHOK'ET' T'A GHONÉ TLIS BEGHONOREYA LAȚ'E NUNÉSHÉ K'ASJ KONÉ TA TLIS HELCHI GREENHOUS GAS HOLYÉ BETLISE YATAGHÉ Y CHJ NIRITTHI

Eghok'et'o nathé níh danelt'o *greenhouse gas emissions*, holyé (t'a t'q nuneshé k'asj *infrared radiation* hollye (sakoné t'a to t'es nezq helé hanele ch'j t'o nihhoneshe baghanoreya laȚ'e k'esj t'oho lanethe k'e nihq't'e Suncor ch'tholchog t'a yekarlkq tthelchi. Nedqho *3 million metric tons of carbon dioxide*, hollye níh danelto yateghe ch'tholchog ke nirethe. Nidri efgok'et'a, *within +/- 20 percent*, hollye sa.

19. EL'K'ECHA LA NATHE YUWIA ȚAȚDEL BET'AHOTIHELÉ 'AH THI TLIS LERÉ TTHAIGHE YATAGHÉ CHJ DETTHAG HEL NERETHÉ

Lanethé elk'echa aladqni la beghalada haȚ'e, dasi ta bet'ahotiHELÉ, naȚi, holthé boghodihela Țaldél, thi nani Nihochjkoldénathé erihltis dyer thela bakare, bogh, odi Țaldél Țat'a. T'a dasi chelé thi Lanethé yuwei elk'echa bet'ahotiHELÉ bet'oreah hela t'oke tasí Țaldél k'e eyer besdolé thi bekasethai. Lanethé elk'echa aladqni yuweai alq bet'oreá thi betanohot'j, elkecha chaȚché tili tlišé thilé la ha bet'ahotiho, thi edinaghakone tlišbeschani beta helkahe bekonihó, elkecha tile beyehotherho thi erihltis tile thini chaȚ nitye alq naȚesj betahot'j ha. Nihochjkoldénathé erihltis dyer thela dakare hqđq Țaldél, nidisli elkecha chaȚché tili tlišé thilé la ha bet'ahotiho, tasí ghane hochi helcho lahabet'ahotiho, tliš tthai zané beghahohatherého eladqni ck'e hĭ dene ghalȚa Țaldá. Tliš beschani naȚbaȚhi noré thi chaȚcháné t'atthé beta t'así ha bet'ahot'j walí elat'o t'a tthané eteba eghalana beghonedí, yat'a naniyalchi ha. Lanethé yuweié ta bet'ahotiHELÉ sorjttthen bebasj ekadani bebasj senq't'a Țat'e, *Suncor Base Plant* k'e. Lanethé elk'e a dasi ta bet'ahotiHELÉ ekadq t'a t'o boghodi ha ba senq't'a Țat'e, nihochjkoldénathé erihltis dyer thela bakare, boghodi, Țaldél Țat'a.

Tliš leretthaighé yat'aghe cheȚ nerethé, tliš *oxides of nitrogen*, hollyé, tliš beschani Lanethé k'e hochj daraka t'a tliš leré helchi thi chaȚchani dareka, thi hochj thi Țat'e. *BeghaȚthennti tliš leré tliš beschani ghqhocí tliš nidisini daraka, t'o k'e nih kaghé chaȚhákale chog t'e nihoyaghe, harelye tliš tthai zene hilcho k'e ho chj, thi chaȚchani elkecha beta tliš hilcho borethaghe t'a, thi tu taieken, toké tliš tthai zene bagha ha deli nilere ho chin thi tlišhorretthagh Țat'e.* Begatthani, horethaghe *sulphur and hydrogen sulphide* hollyé hochjñ dethag. T'achjhochj k'ocháhele tliš lere holj, dechin hilcho lake hole ha thi niho kaghe seholye t'a thi, tuasé holj t'o k'e tliš ttha zene beghahatheré nidili thi hochj horetthaghe holj. Tliš leré tthaighé yat'aghé chj detthagho nerethé thi datthage Țat'e. Tliš tthai zene begalada beta tliš tthaghe het'j ha *Base Plant operations* (lanethé k'e hollye (lanethé k'e) naré thi tliš leré tthaighé hqĭ ha tle.

APPENDIX A

References

The following documents are references in the English version of this document, which is the basis for this translated version. The references are provided here, in English, to ensure that credit is given to the authors whose work is used in this document.

- AHS (Alberta Health Services). 2019. *2019 Report on Cancer Statistics in Alberta. Surveillance & Reporting*. CancerControl AB. Edmonton, Alberta. Available at:
<https://public.tableau.com/profile/cancercontrol.ab#!/vizhome/The2019ReportonCancerStatisticsinAlberta/Highlights?publish=yes>
- Alberta Sustainable Resource Development. 2002. *Fort McMurray-Athabasca Oil Sands Subregional Integrated Resource Plan*. 67 p.
- Government of Alberta. 2012. *Lower Athabasca Regional Plan 2012-2022*. 94 p.
- Government of Canada. 2019. *The Impact Assessment Act Guide to Preparing an Initial Project Description and a Detailed Project Description* (<https://www.canada.ca/en/impact-assessment-agency/services/policy-guidance/practitioners-guide-impact-assessment-act/guide-preparing-project-description-detailed-project-description.html>). Accessed October 20, 2019.
- Natural Regions Committee. 2006. *Natural Regions and Subregions of Alberta*. Compiled by D.J. Downing and W.W. Petapiece. Government of Alberta. Pub. No. T/852. 264 p.
- RSCEP (Royal Society of Canada Expert Panel). 2010. *Environmental and Health Impacts of Canada's Oil Sands Industry*. Report. The Royal Society of Canada. The Academies of Arts, Humanities, and Sciences of Canada. December 2010.
-